



THE LEADER AND CREATOR OF FLIP CHIP DISPLAY PANEL

Diamond Series

Ultra HD Indoor Fine Pixel Pitch LED Display

Die-cast Aluminum Frame

Lightweight, high precision, and excellent flatness.

Multiple Cabinet sizes available

960*480, 480*480, 960*240, 480*240mm.

Fast Maintenance

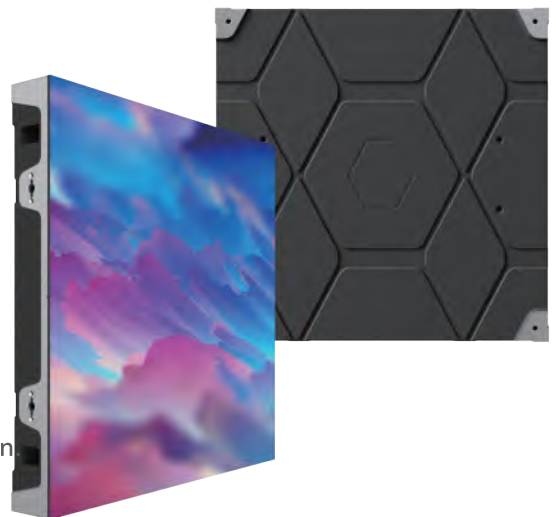
All components front maintenance, fast and convenient.

High Protection

GOB encapsulation available, providing comprehensive protection

Backup Function Optional

Support dual receiving card and power supply backup.



GOB High Protection



Full and Half Size



Easy Maintenance

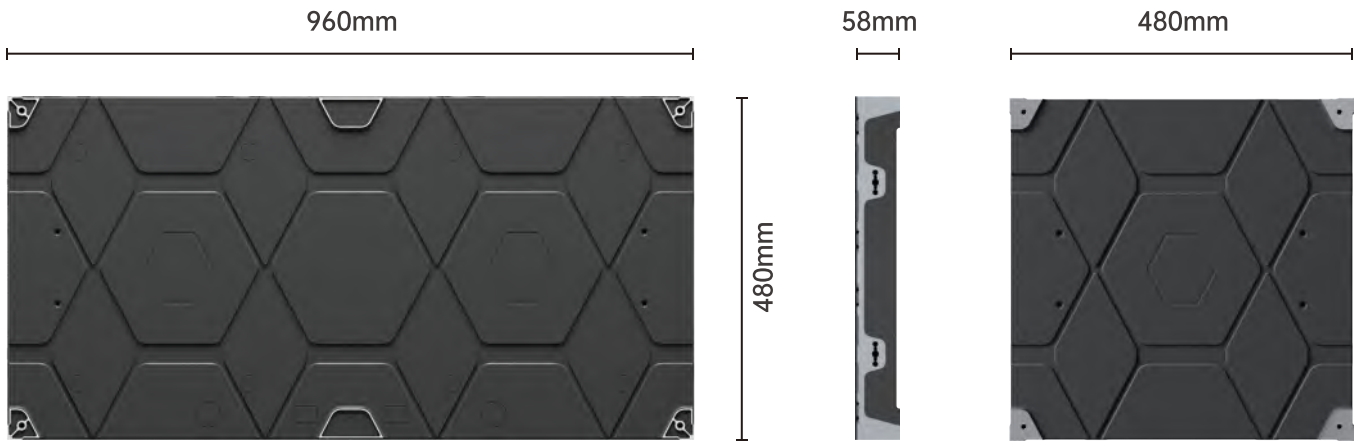


Fine Pitch LED Floor

PRODUCT SIZE



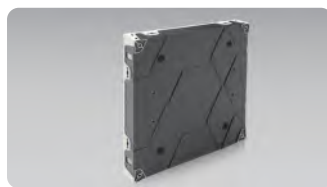
480*480*58



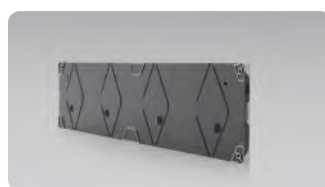
Multiple Size Available



960×480 mm



480×480 mm



960×240 mm



480×240 mm





PRODUCT FEATURES



GOB High Protection

Special treatment with GOB technology, enabling surface water-resistant, dust-resistant.



-  Anti-collision
-  Anti-oxidation
-  Moisture-resistant
-  Anti-static

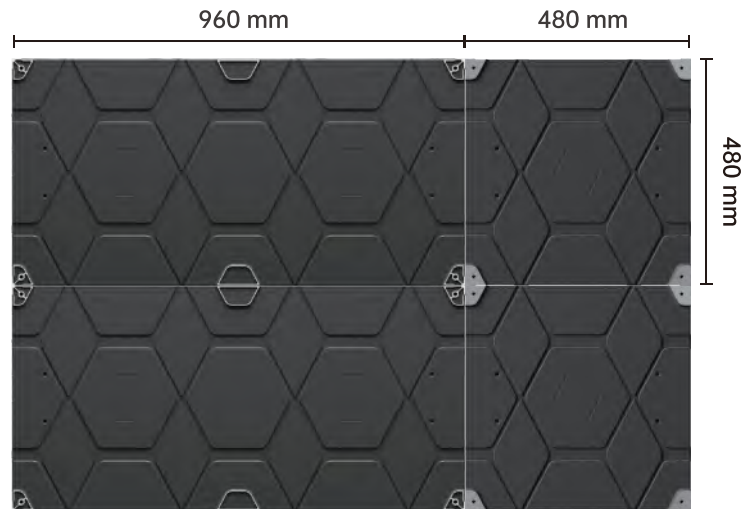
Easy Maintenance

Front installation, front maintenance, all components can be removed front side, fast and convenient



Multi-size Splicing

Four cabinet size splicing installation to maximize size requirement.



APPLICATION



DIAMONDS SERIES SPECIFICATION

	94B12	94B15	94B18	94B25	94B30
Pixel Pitch (mm)	P1.29	P1.579	P1.875	P2.5	P3.0
Cabinet Resolution (mm)(W×H)	744×372	608×304	512×256	384×192	320×160
Pixel Density (dots/m ²)	600,739	401,084	284,444	160,000	111,111
Pixel Configuration	SMD1010	SMD1010/1212	SMD1515	SMD2121	SMD2121
Cabinet Size (mm)(W×H×D)	960×480×61				
Brightness (nits)	600~800				
Gray Scale (bit)	14				
Pixel Calibration	Support brightness and color calibration				
Color Temp (K)	2000~12000 (Adjustable)				
IP Level	IP40				
Refresh Rate (Hz)	3840				
Working Voltage (V)	AC: 100V~240V, 50~60Hz				
Max. Power Consumption (W/m ²)	300-500	300-500	300-500	300-500	300-500
Avg. Power Consumption (W/m ²)	100-170	100-170	100-170	100-170	100-170
Lifetime (H)	100,000				
Operation Temp (°C)	-10~+40				
Storage Temp (°C)	-20~+60				
Operation Humidity (RH)	10%~80%, no condensation				
Cabinet Weight (kg)	10.6				

	48D12	48D15	48D18	48D25	48D30
Pixel Pitch (mm)	P1.29	P1.579	P1.875	P2.5	P3.0
Cabinet Resolution (mm)(W×H)	372×372	304×304	256×256	192×192	192×192
Pixel Density (dots/m ²)	600,739	401,084	284,444	160,000	160,000
Pixel Configuration	SMD1010	SMD1010/1212	SMD1515	SMD2121	SMD2121
Cabinet Size (mm)(W×H×D)	480×480×61				
Brightness (nits)	200~800				
Gray Scale (bit)	14				
Pixel Calibration	Support brightness and color calibration				
Color Temp (K)	2000~12000 (Adjustable)				
IP Level	IP40				
Refresh Rate (Hz)	3840				
Working Voltage (V)	AC: 100V~240V, 50~60Hz				
Max. Power Consumption (W/m ²)	300-500	300-500	300-500	300-500	300-500
Avg. Power Consumption (W/m ²)	100-170	100-170	100-170	100-170	100-170
Lifetime (H)	100,000				
Operation Temp (°C)	-10~+40				
Storage Temp (°C)	-20~+60				
Operation Humidity (RH)	10%~80%, no condensation				
Cabinet Weight (kg)	5.85				

The parameter index will change according to the specific situation of the project (the product shall be subjected to the submitted contract specification).

SHENZHEN LP DISPLAY TECHNOLOGY CO., LTD

☎ 86+0755-2350 2825 🌐 www.szlpdisplay.com

✉ oversea@szlpdisplay.com

📍 5D-701, Shenzhen Software Industry Base, Haitian Second Road,
Nanshan, Shenzhen, Guangdong, China



Company
Official Website