



THE LEADER AND CREATOR OF FLIP CHIP DISPLAY PANEL

# Firefly Series

INDOOR HIGH COST-EFFECTIVE FINE PITCH FIXED PRODUCT



## Diverse Pixel Spacing Options

Convenient Screen Upgrade with Module Replacement Only  
Available in 0.93,1.25,1.56,1.87mm pixel pitch



## Full Flip Chip package

All pixel pitch full Flip chip package makes wider view angle and good heat dissipation



## Integrated Wireless Design Advantages

Safety assurance and swift maintenance



## Redundancy options

Signal and power redundancy options for better stability



## Comprehensive High-Protection Features

Moisture, Dust, Static, and Collision Resistant with COB

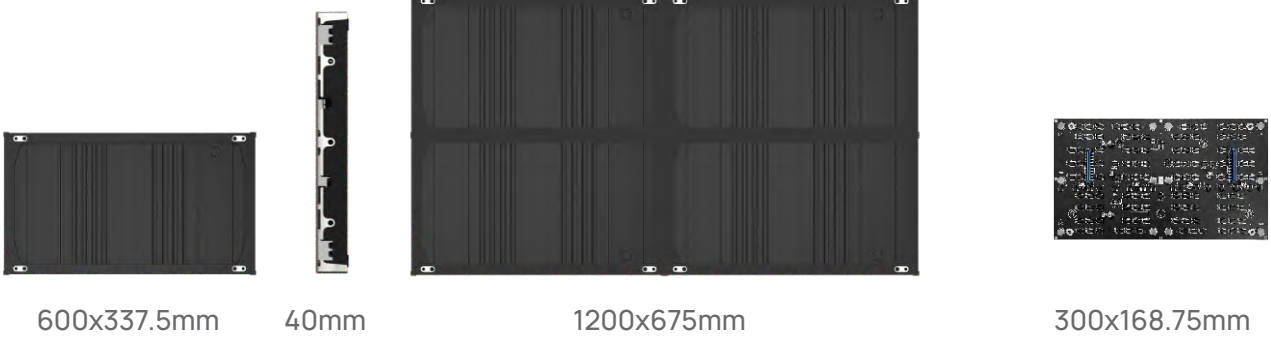


## Lightweight Panel Design

600\*337.5mm size 21.7kg/m<sup>2</sup> ,1200\*675mm size 20kg/m<sup>2</sup>, reduce Labor Costs During Installation



## Multiple cabinet size options



## High contrast ratio

10000:1 high contrast ratio make the video wall bright colors and vivid



Ordinary



Lpdisplay

## Low brightness but high gray level

Even in low brightness but no gray lost ,details are clear and layered



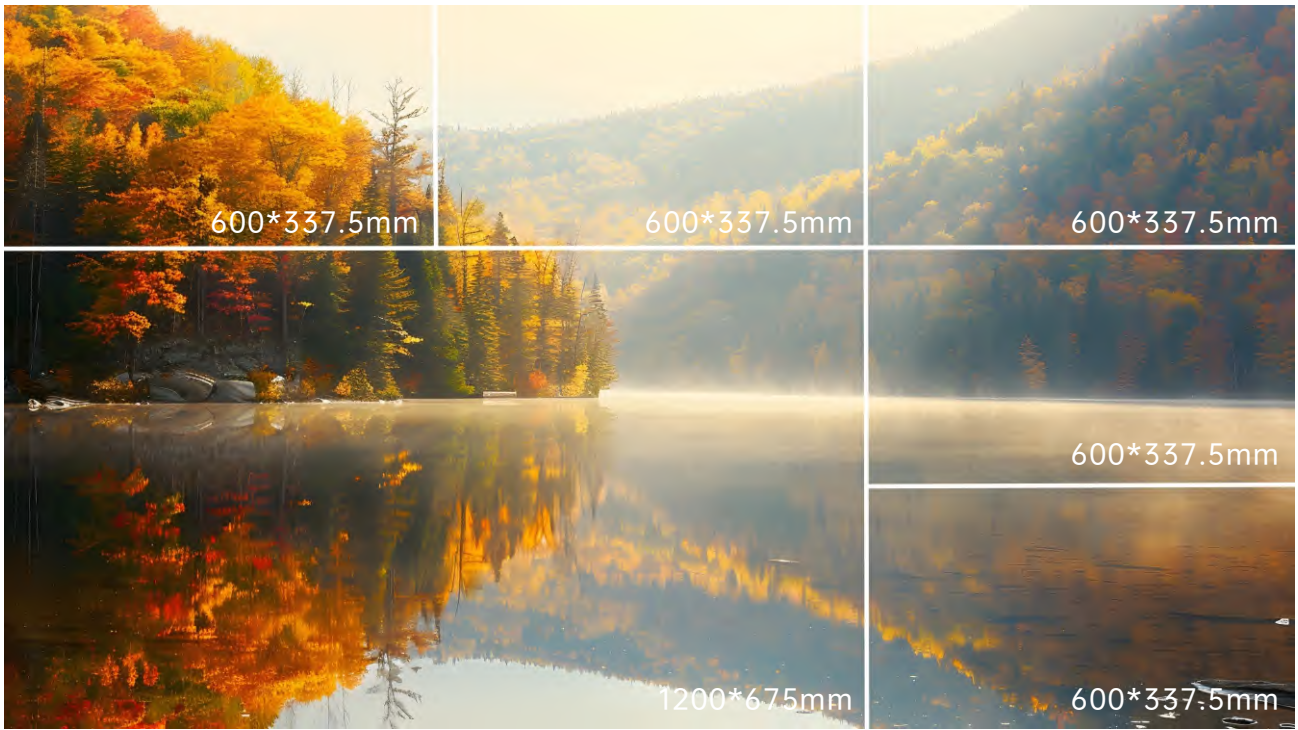
Ordinary



Lpdisplay

## Multi-Size Splicing

Flexible splicing of large and small size cabinet, maximize meet the installation size requirement.

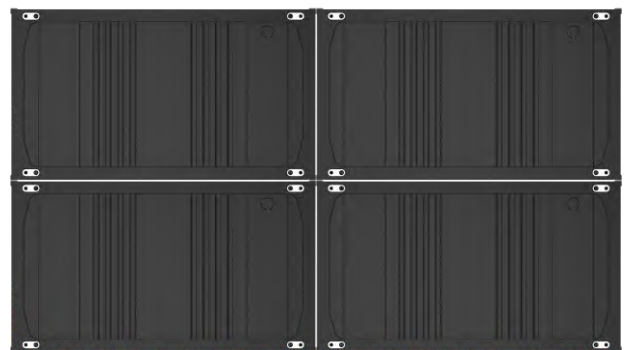


## Larg size cabinet design



1200\*675\*40mm\*1

VS



600\*337.5\*40mm\*4



Large-size cabinet design



Reduce splicing gaps





Reduce installation time



Save labor cost

# Super Protection



-  Anti-collision
-  Anti-oxidation
-  Moisture-resistant
-  Anti-static
-  Easy clean

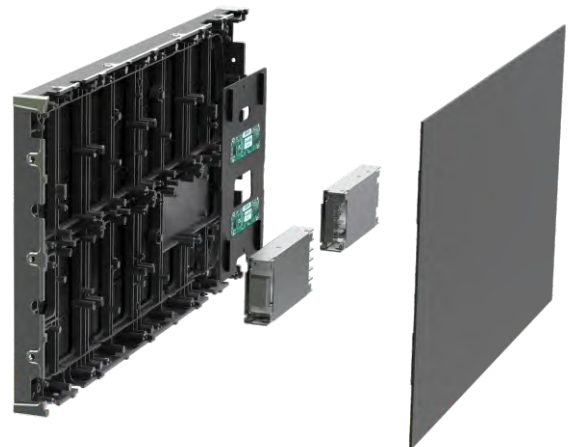


## Light Weight design

- Lightweight Design
- Cost Savings

## Redundancy design

Dual receiving card and power supply options, provides 4 times safety video wall never black out.



Categories	Model	63V09	63V12	63V15	63V18
Physical Parameters	Pixel Pitch(mm)	0.9375	1.25	1.5625	1.5625
	Pixel Configuration	Flip Chip COB			
	Pixel Density (dots/m <sup>2</sup> )	1,137,778	640,000	409,600	284,444
	Cabinet Size (W×H×D)	600 × 337.5 × 40mm			
	Cabinet Resolution (W×H)	640 × 360	480 × 270	384×216	320×180
	Cabinet Material	Die-cast aluminum			
	Module Size (W×H)	300 × 168.75 mm			
	Weight	4.4kg			
Optical Parameters	Viewing Angle	170° / 170°			
	Brightness (cd/m <sup>2</sup> )	600			
	Brightness Uniformity	≥98%			
	Contrast	10,000 : 1			
	Refresh Rate	3840			
	Gray Scale	14~ 16 bit			
	Color Calibration	Pixel to Pixel			
	Color Temperature	2000~10000K			
Electrical Parameters	A.C. Inputs	100 ~ 240 V			
	Frame	50 / 60 hz			
	Power Consumption (Max.)	300 W/m <sup>2</sup>	300 W/m <sup>2</sup>	270 W/m <sup>2</sup>	270W/m <sup>2</sup>
	Power Consumption (Avg.)	100 W/m <sup>2</sup>	100 W/m <sup>2</sup>	90 W/m <sup>2</sup>	90 W/m <sup>2</sup>
	Redundancy	Optional			
Application	Serviceability	Front			
	Operation Temperature	-10°C ~ 40°C			
	Operation Humidity	10%~90%RH			
	Ingress Protection	IP54 fornt/IP20 rear			
	Exterior/Interior	Interior			
	Lifespan	100,000 hrs			
Others	Certificates	CE, FCC, CB, ETL			
	Packing	Wooden box			

Categories	Model	C6K09	C6K12	C6K15	C6K18
Physical Parameters	Pixel Pitch(mm)	0.9375	1.25	1.5625	1.5625
	Pixel Configuration	Flip Chip COB			
	Pixel Density (dots/m <sup>2</sup> )	1,137,778	640,000	409,600	284,444
	Cabinet Size (W×H×D)	1200 × 675 × 40mm			
	Cabinet Resolution (W×H)	1280 × 720	960 × 540	768×432	640×360
	Cabinet Material	Die-cast aluminum			
	Module Size (W×H)	300 × 168.75 mm			
	Weight	16.5kg			
Optical Parameters	Viewing Angle	170° / 170°			
	Brightness (cd/m <sup>2</sup> )	600			
	Brightness Uniformity	≥98%			
	Contrast	10,000 : 1			
	Refresh Rate	3840			
	Gray Scale	14~ 16 bit			
	Color Calibration	Pixel to Pixel			
	Color Temperature	2000~10000K			
Electrical Parameters	A.C. Inputs	100 ~ 240 V			
	Frame	50 / 60 hz			
	Power Consumption (Max.)	300 W/m <sup>2</sup>	300 W/m <sup>2</sup>	270 W/m <sup>2</sup>	270W/m <sup>2</sup>
	Power Consumption (Avg.)	100 W/m <sup>2</sup>	100 W/m <sup>2</sup>	90 W/m <sup>2</sup>	90 W/m <sup>2</sup>
	Redundancy	Optional			
Application	Serviceability	Front			
	Operation Temperature	-10°C ~ 40°C			
	Operation Humidity	10%~90%RH			
	Ingress Protection	IP54 fornt/IP20 rear			
	Exterior/Interior	Interior			
	Lifespan	100,000 hrs			
Others	Certificates	CE, FCC, CB, ETL			
	Packing	Wooden box			

Categories	Model	63V12	63V15	63V18
Physical Parameters	Pixel Pitch(mm)	1.25	1.5625	1.5625
	Pixel Configuration	SMD		
	Pixel Density (dots/m <sup>2</sup> )	640,000	409,600	284,444
	Cabinet Size (W×H×D)	600 × 337.5 × 40mm		
	Cabinet Resolution (W×H)	480 x 270	384x216	320x180
	Cabinet Material	Die-cast aluminum		
	Module Size (W×H)	300 × 168.75 mm		
	Weight	4.4kg		
Optical Parameters	Viewing Angle	160° / 160°		
	Brightness (cd/m <sup>2</sup> )	500-600		
	Brightness Uniformity	≥98%		
	Contrast	7,000 : 1		
	Refresh Rate	3840		
	Gray Scale	14~ 16 bit		
	Color Calibration	Pixel to Pixel		
	Color Temperature	2000~10000K		
Electrical Parameters	A.C. Inputs	100 ~ 240 V		
	Frame	50 / 60 hz		
	Power Consumption (Max.)	400 W/m		
	Power Consumption (Avg.)	130 W/m		
	Redundancy	Optional		
Application	Serviceability	Front		
	Operation Temperature	-10°C ~ 40°C		
	Operation Humidity	10%~90%RH		
	Ingress Protection	Ip40 fornt/IP20 rear		
	Exterior/Interior	Interior		
	Lifespan	100,000 hrs		
Others	Certificates	CE, FCC, CB, ETL		
	Packing	Wooden box		

Categories	Model	C6K12	C6K15	C6K18
Physical Parameters	Pixel Pitch(mm)	1.25	1.5625	1.875
	Pixel Configuration	SMD		
	Pixel Density (dots/m <sup>2</sup> )	640,000	409,600	284,444
	Cabinet Size (W×H×D)	1200 × 675 × 40mm		
	Cabinet Resolution (W×H)	960 x 540	768x432	640x360
	Cabinet Material	Die-cast aluminum		
	Module Size (W×H)	300 × 168.75 mm		
	Weight	16.5kg		
Optical Parameters	Viewing Angle	160° / 160°		
	Brightness (cd/m <sup>2</sup> )	500-600		
	Brightness Uniformity	≥98%		
	Contrast	7,000 : 1		
	Refresh Rate	3840		
	Gray Scale	14~ 16 bit		
	Color Calibration	Pixel to Pixel		
	Color Temperature	2000~10000K		
Electrical Parameters	A.C. Inputs	100 ~ 240 V		
	Frame	50 / 60 hz		
	Power Consumption (Max.)	2	400 W/m	
	Power Consumption (Avg.)	130 W/m <sup>2</sup>		
	Redundancy	Optional		
Application	Serviceability	Front		
	Operation Temperature	-10°C ~ 40°C		
	Operation Humidity	10%~90%RH		
	Ingress Protection	IP40front/IP20 rear		
	Exterior/Interior	Interior		
	Lifespan	100,000 hrs		
Others	Certificates	CE, FCC, CB , ETL		
	Packing	Wooden box		

## SHENZHEN LP DISPLAY TECHNOLOGY CO., LTD

+86-755-2350 2825

[www.szlpdisplay.com](http://www.szlpdisplay.com)

[oversea@szlpdisplay.com](mailto:oversea@szlpdisplay.com)

5D-701, Shenzhen Software Industry Base, Haitian Second Road,  
Nanshan, Shenzhen, Guangdong, China



Company  
Official Website