



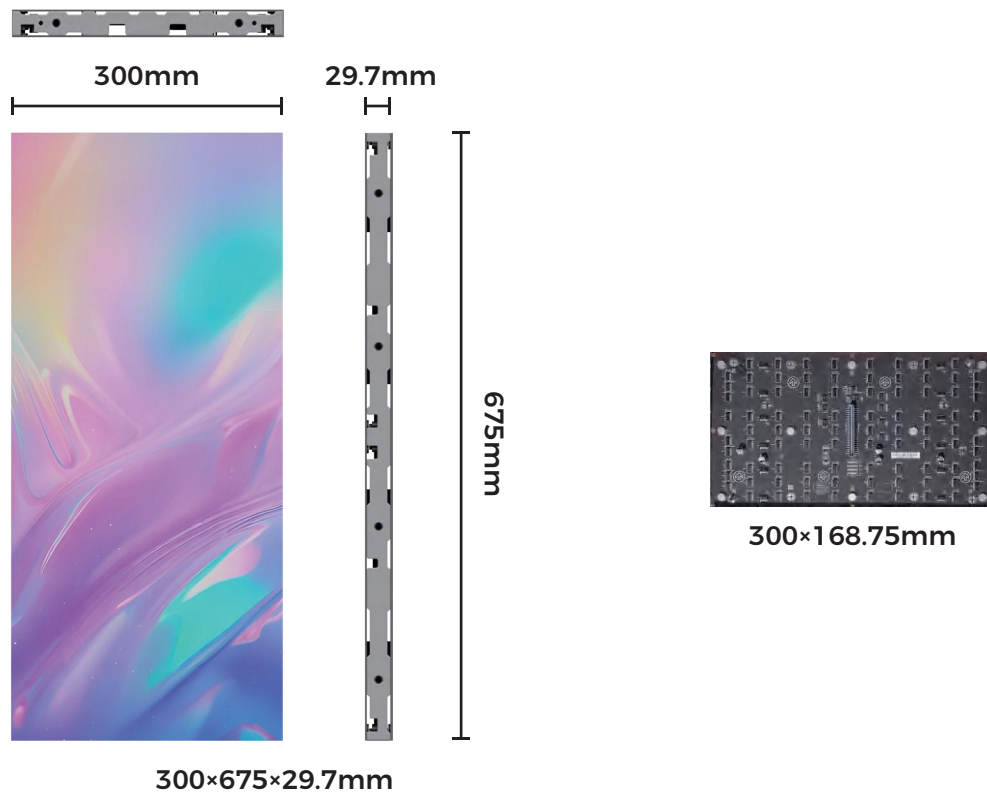
## Gemini Series

### FULL FLIP CHIP INDOOR FINE PITCH FIXED LED DISPLAY

- Available in 0.93, 1.25, 1.56, 1.87mm pixel pitch, Easy to upgrade the screen, only need to replace the module, the other materials are keep using.
- Flip chip Common cathode design for better energy saving, great savings on electricity costs.
- Integrated cableless design for safety and fast maintenance.
- Super slim cabinet with thickness only 29.7mm, low space requirement of installation and saving more transportation cost of container.
- High protection, moisture-proof, dustproof, antistatic and anti-collision with COB package.
- Light weight design, less than 20kg/m<sup>2</sup>, low stress requirement on the installation structures.

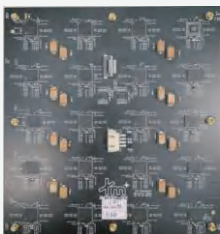
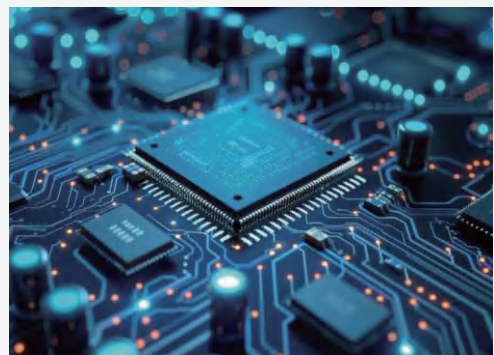


# Product Display

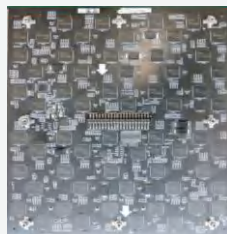


## Most Advanced Drive IC For Optional

- ▲ Common cathode PWM constant current driver IC, energy saving.
- ▲ Precise current control, Perfect solution to cross-board coupling and chromatic aberration.
- ▲ Fine low gray calibration with 3ns pulse width.
- ▲ High gray level 16bit, work with Nova system can be 22bit+ color processing depth.



LP Display

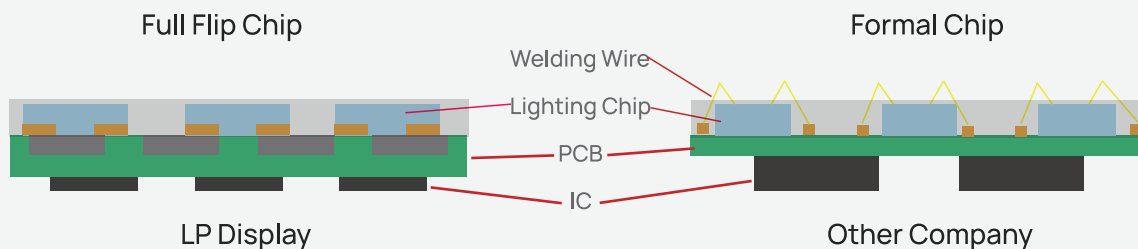


Other Company

- ▲ Large channel design chips, less chips less cost.
- ▲ Same size, fewer chips, less heat generation.
- ▲ Helps improve life and stability.

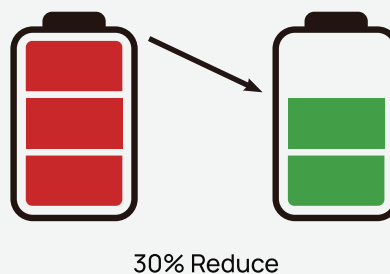
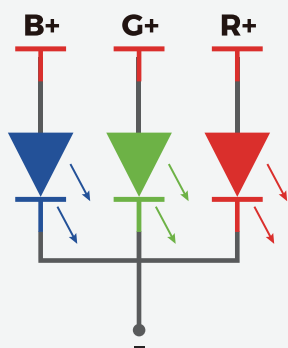
## Full Flip Chip COB

- ▲ Flip chip mip technology, no welding pad block. high luminous efficiency.
- ▲ No welding wire, reduce the failure rate of the lamp bead.
- ▲ Light-emitting chip direct contact with the pcb, which improves heat dissipation.



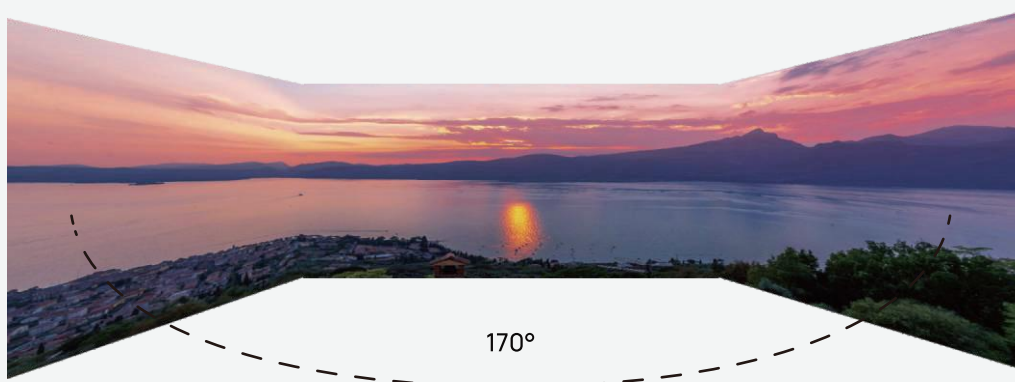
## Common Cathode Design

Product use common cathode design to reduces power consumption, less heat generation, lower screen temperature, improves stability and longevity.



## Wider View Angle

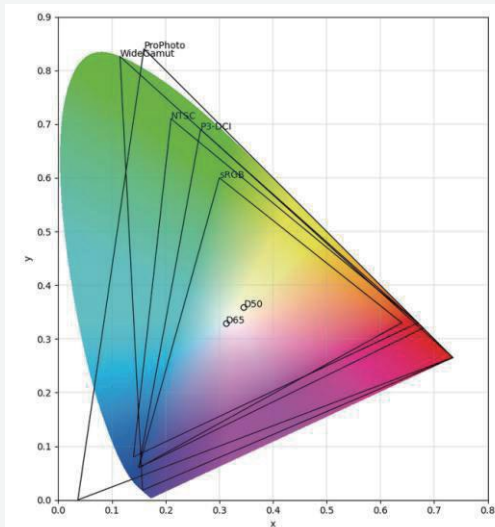
Flip chip COB makes wider view angle 170°/170°.





## Super High Contrast Ratio

15,000:1 ultra high contrast ratio at 1000nits brightness make the effect more vivid.



## Wide Color Gamut

97% DCI-P3 color gamut options.

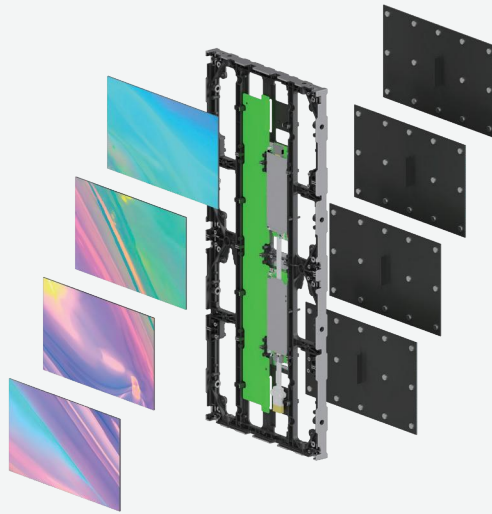
## Multi-layer Full Gray Scale Calibration

Calibration under various brightness conditions to ensure good consistency whether it is high or low brightness.

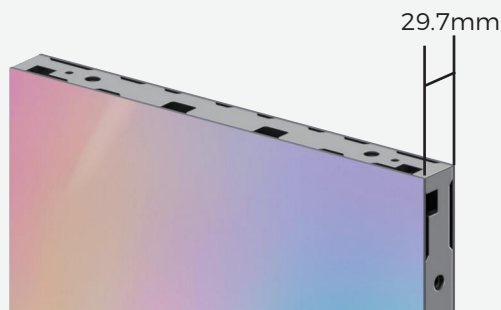


## Modular design

Module, power supply, receiving card are hard link.



## Ultra-thin 29.7mm



## Installation with hanging beam



## COB Package Protection



- Waterproof
- Moisture-proof
- Anti-static electricity
- Impact-resistant
- Anti-oxidation

## Ultra-light 4.3KG/cabinet





# Specification

| Categories            | Model                    | 36B09                  | 36B12          | 36B15          | 36B18          |
|-----------------------|--------------------------|------------------------|----------------|----------------|----------------|
| Physical Parameters   | Pixel Pitch              | 0.9375mm               | 1.25mm         | 1.5625mm       | 1.875mm        |
|                       | Pixel Configuration      | COB                    | COB            | COB            | COB            |
|                       | Pixel Density (dots/m²)  | 1,137,778              | 640,000        | 409,600        | 284,444        |
|                       | Cabinet Size (W×H×D)     | 300×675×29.7mm         | 300×675×29.7mm | 300×675×29.7mm | 300×675×29.7mm |
|                       | Cabinet Resolution (W×H) | 320×720                | 240×540        | 192×432        | 160×360        |
|                       | Cabinet Material         | Die-cast aluminum      |                |                |                |
|                       | Module Size (W×H)        | 300×168.75mm           |                |                |                |
|                       | Weight                   | 4.3kg/cabinet; 21kg/m² |                |                |                |
| Optical Parameters    | Viewing Angle            | 170°(V)   170°(H)      |                |                |                |
|                       | Surface Treatment        | Black matte            |                |                |                |
|                       | Brightness (cd/m²)       | 800-1000               |                |                |                |
|                       | Brightness Uniformity    | >98%                   |                |                |                |
|                       | Contrast                 | 15,000 :1              |                |                |                |
|                       | Refresh Rate             | 3840-7680hz            |                |                |                |
|                       | Gray Scale               | 14~16 bit              |                |                |                |
|                       | Color Calibration        | Pixel to Pixel         |                |                |                |
|                       | Color Temperature        | 2000~10000K            |                |                |                |
|                       | Color Gamut              | >97% DCI-P3            |                |                |                |
|                       | HDR                      | HLG /HDR /HDR 10+      |                |                |                |
| Electrical Parameters | Inputs                   | 100~240 V              | 100~240 V      | 100~240 V      | 100~240 V      |
|                       | Frame                    | 50 /60 hz              | 50 /60 hz      | 50 /60 hz      | 50 /60 hz      |
|                       | Power Consumption (Max.) | 300-450 w/m²           | 300-450 w/m²   | 300-450 w/m²   | 300-450 w/m²   |
|                       | Power Consumption (Avg.) | 100-150 W/m²           | 100-150 W/m²   | 100-150 W/m²   | 100-150 W/m²   |
|                       | Redundancy               | Optional               |                |                |                |
| Application           | Serviceability           | Front                  | Front          | Front          | Front          |
|                       | Operation Temperature    | -10℃~40℃               | -10℃~40℃       | -10℃~40℃       | -10℃~40℃       |
|                       | Operation Humidity       | 10%-85%RH              | 10%-85%RH      | 10%-85%RH      | 10%-85%RH      |
|                       | Ingress Protection       | IP40                   |                |                |                |
|                       | Exterior/Interior        | Interior               |                |                |                |
|                       | Lifespan                 | 100000 hrs             |                |                |                |
| Others                | Packing                  | Cartons                |                |                |                |
|                       |                          |                        |                |                |                |




## SHENZHEN LP DISPLAY TECHNOLOGY CO., LTD

 86+0755-2350 2825

 [www.szlpdisplay.com](http://www.szlpdisplay.com)

 [oversea@szlpdisplay.com](mailto:oversea@szlpdisplay.com)

 11th Floor, Building 1, Huidongsheng industrial Park, No. 1028 Guangqiao Avenue,  
Yulu Community, Yutang Street, Guangming District, Shenzhen, P.R. China



Company  
Official Website