



THE LEADER AND CREATOR OF FLIP CHIP DISPLAY PANEL

Magic Cube Series

Indoor Fine Pixel Pitch Fixed LED Display

PRODUCT OVERVIEW



Die casting aluminum cabinet
High precision, light weight, good flatness.



SMD/MIP optional
SMD or MIP are available now.



Common cathode energy saving
MIP package use common cathode current design for energy saving and reduce video wall temperature.



Redundancy
Dual receiving card and power supply optional.



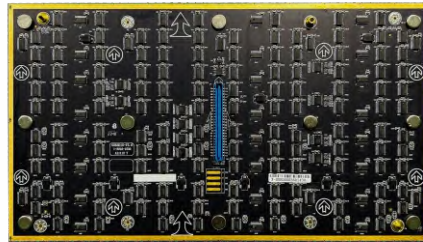
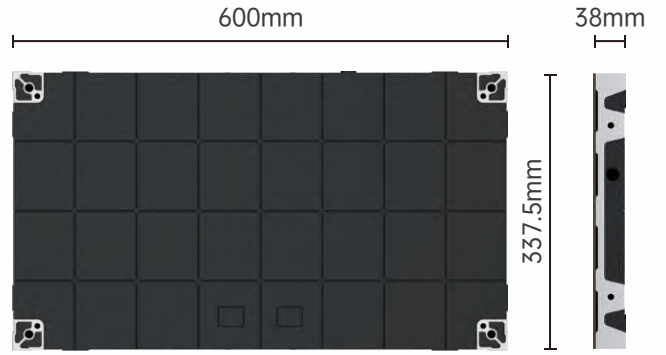
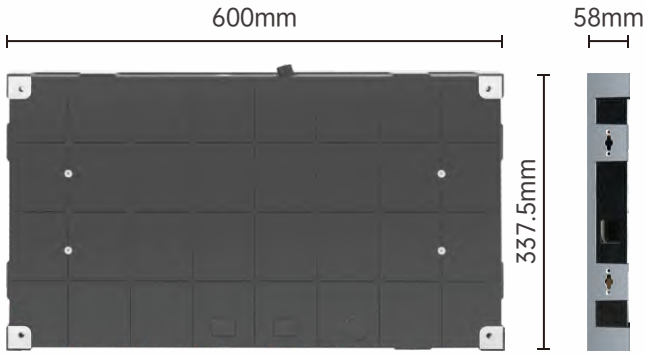
Fully front maintenance
Integrated wireless design for higher stability and fast maintenance.



High protection
MIP+GOB package brings moisture-proof, dust-proof, antistatic and anti-collision.



PRODUCT DISPLAY

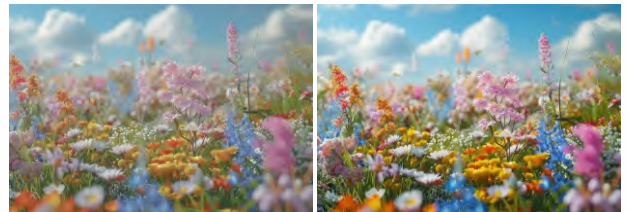


PRODUCT FEATURES

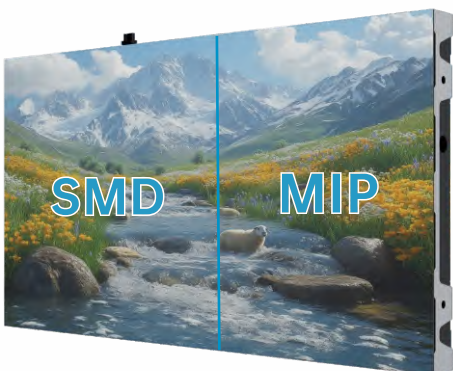


High gray level

With 16 bit color processing, image transition from dark to bright is smooth, colorful and bright.



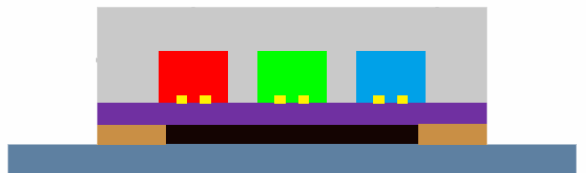
SMD/MIP Optional



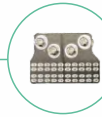
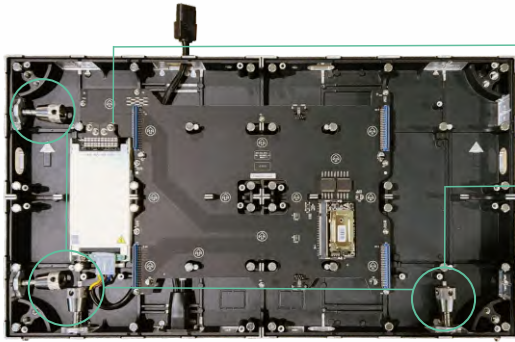
Full Flip Chip & Common Cathode



Energy saving High contrast ratio Wider view angle



Easy Installation



The power supply, module, and HUB board are all designed with hard connections to improve product stability.



The left and bottom of the cabinet are equipped with spring locks, make installation fast.



The bottom of the cabinet is designed with positioning columns for quick positioning and precise seamless splicing during installation.

GOB High Protection

Special treatment with GOB technology, enabling surface water-resistant, dust-resistant, impact-resistant and anti-static.



Anti-collision



Anti-oxidation



Moisture-resistant



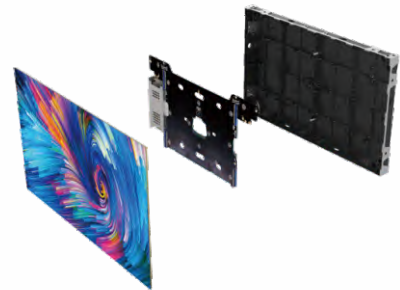
Easy clean



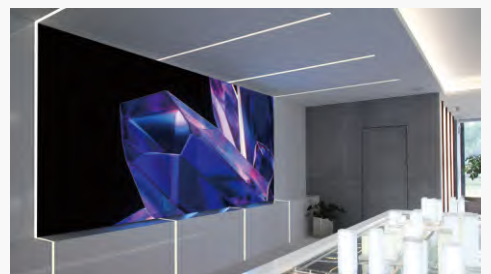
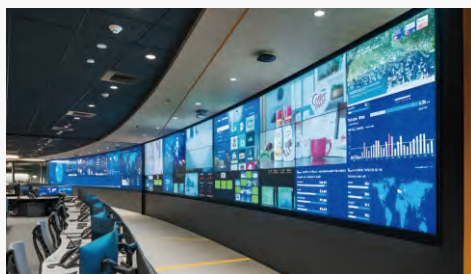
Anti-static

Easy Maintenance

All components can be full front maintenance.



APPLICATIONS



MAGIC CUBE SERIES SPECIFICATION

SMD

Pixel Pitch (mm)	P0.9375	P1.25	P1.56	P1.87	P2.5	P3.7
Cabinet Resolution (W×H)	640×360	480×270	384×216	320×180	240×135	160×90
Pixel Density (dots/m ²)	1,137,778	640,000	409,600	284,444	160,000	71,111
Cabinet Size (mm)(W×H)	600×337.5					
Brightness (nits)	600-800	≤800	≤800	≤800	≤800	≤800
Gray Scale (bit)	14-16					
Pixel Calibration	Support brightness and color calibration					
Color Temp (K)	2000-12000 (Adjustable)					
Control System	Synchronous control					
Drive Mode	Constant current drive (Compatible)					
Frame Rate (Hz)	50/60					
Refresh Rate (Hz)	≥3840					
Working Voltage (V)	AC: 100V-240V, 50-60Hz					
Max. Power Consumption (W/m ²)	≤750	≤550	≤500	≤500	≤400	≤400
Avg. Power Consumption (W/m ²)	≤240	≤220	≤200	≤170	≤130	≤130
Lifetime (H)	100,000					
Operation Temp (°C)	-10~+40					
Storage Temp (°C)	-20~+60					
Operation Humidity (RH)	10%~80%, no condensation					
Cabinet Weight (kg)	600*337.5*38mm 5.2kg/600*337.5*58mm 7.2kg					

FLIP CHIP MIP(High Contrast)

Pixel Pitch (mm)	P0.9375	P1.25	P1.56	P1.87	P2.5
Cabinet Resolution (W×H)	640×360	480×270	384×216	320×180	240×135
Pixel Density (dots/m ²)	1,137,778	640,000	409,600	284,444	160,000
Cabinet Size (mm)(W×H)	600×337.5				
Brightness (nits)	≤1000	≤1000	≤1000	≤1000	≤1000
Gray Scale (bit)	14-16				
Pixel Calibration	Support brightness and color calibration				
Color Temp (K)	2000-12000 (Adjustable)				
Control System	Synchronous control				
Drive Mode	Constant current drive (Compatible)				
Frame Rate (Hz)	50/60				
Refresh Rate (Hz)	≥3840				
Working Voltage (V)	AC: 100V-240V, 50-60Hz				
Contrast Ratio	≥20,000:1				
Max. Power Consumption (W/m ²)	≤500	≤500	≤550	≤600	≤600
Avg. Power Consumption (W/m ²)	≤170	≤170	≤170	≤200	≤200
Lifetime (H)	100,000				
Operation Temp (°C)	-10~+40				
Storage Temp (°C)	-20~+60				
Operation Humidity (RH)	10%~80%, no condensation				
Cabinet Weight (kg)	600*337.5*38mm 5.3kg/600*337.5*58mm 7.3kg				

FLIP CHIP MIP(High Brightness)

Pixel Pitch (mm)	P0.9375	P1.25	P1.56	P1.87	P2.5
Cabinet Resolution (W×H)	640×360	480×270	384×216	320×180	240×135
Pixel Density (dots/m ²)	1,137,778	640,000	409,600	284,444	160,000
Cabinet Size (mm)(W×H)	600×337.5				
Brightness (nits)	≤4000	≤4000	≤4000	≤4000	≤4000
Gray Scale (bit)	14-16				
Pixel Calibration	Support brightness and color calibration				
Color Temp (K)	2000-12000 (Adjustable)				
Control System	Synchronous control				
Drive Mode	Constant current drive (Compatible)				
Frame Rate (Hz)	50/60				
Refresh Rate (Hz)	≥3840				
Working Voltage (V)	AC: 100V-240V, 50-60Hz				
Max. Power Consumption (W/m ²)	≤650	≤650	≤650	≤650	≤650
Avg. Power Consumption (W/m ²)	≤210	≤210	≤210	≤210	≤210
Lifetime (H)	100,000				
Operation Temp (°C)	-10~+40				
Storage Temp (°C)	-20~+60				
Operation Humidity (RH)	10%~80%, no condensation				
Cabinet Weight (kg)	600*337.5*38mm 5.3kg/600*337.5*58mm 7.3kg				

The parameter index will change according to the specific situation of the project (the product shall be subjected to the submitted contract specification)

SHENZHEN LP DISPLAY TECHNOLOGY CO., LTD

+86-755-2350 2825 www.szlpdisplay.com

oversea@szlpdisplay.com

5D-701, Shenzhen Software Industry Base, Haitian Second Road, Nanshan, Shenzhen, Guangdong, China



Company
Official Website