

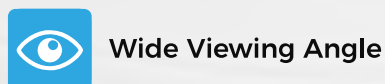
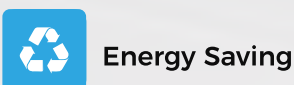


Outdoor series



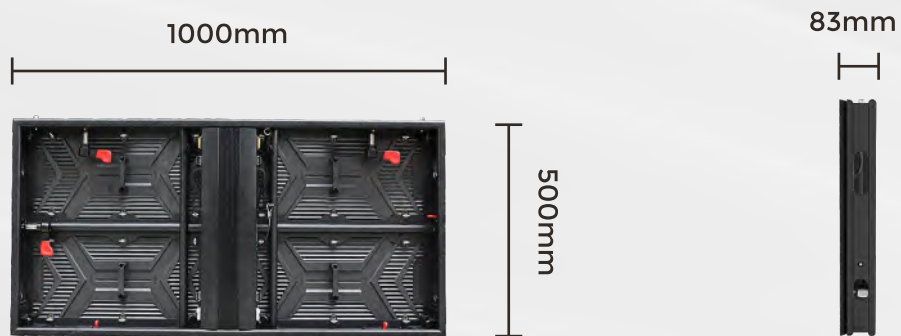
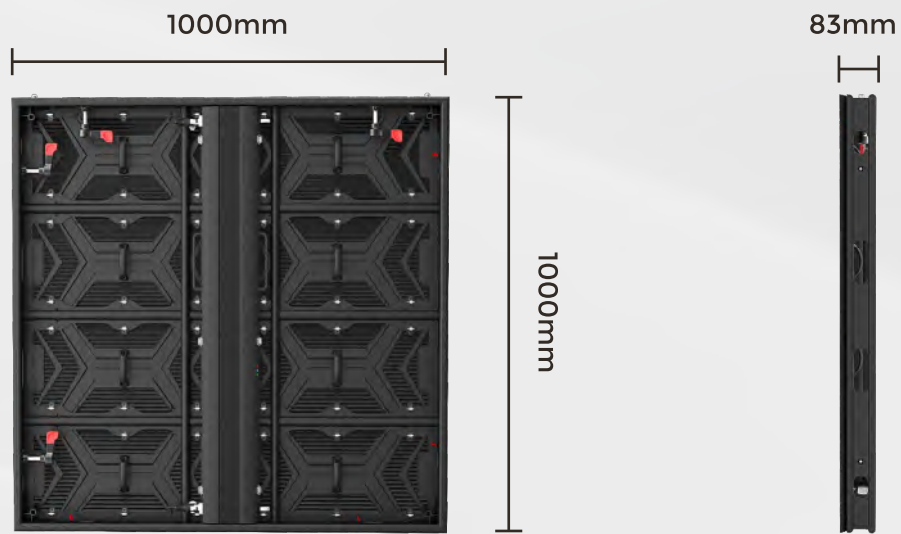
High-end energy-saving LED display

Outdoor series product is primarily designed for full outdoor display applications. This series features high brightness, high refresh rate, and high contrast, delivering outstanding display effects. Ip65 front and rear protection level makes it no fears to all kinds of harsh environments, making it the best choice for your outdoor display requirements.



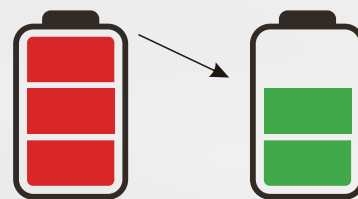
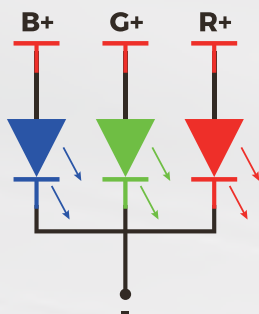


Product Display



Common Cathode Design optional

Product can use common cathode design to reduce power consumption, less heat generation, lower screen temperature, improve stability and longevity.



Energy Saving



IP65 Protection

IP65 Waterproof for both front and back side.



Hard link

Module hard link to cabinet for high stability.



Light Weight Design

Lightweight design leads to cost savings by reducing material usage and improving efficiency.

Weight is **35%** lighter

22.5kg

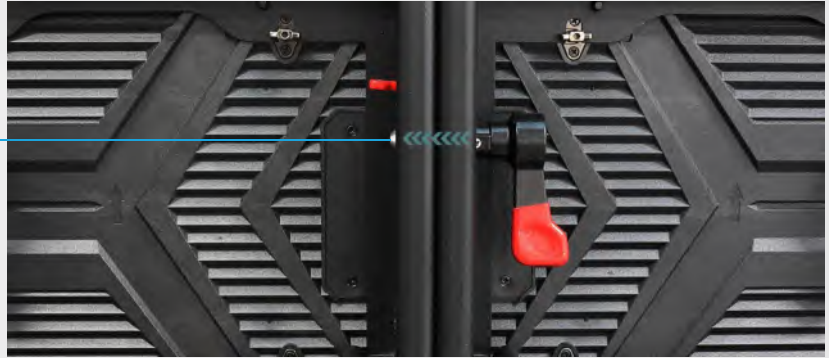




Fast Installation

Stainless fast lock High precision aluminum alloy panel Quick assembly Good flatness.

Stainless steel
lock catch



Full-front and Rear maintenance

Suits for all outdoor applications.



160° Ultra Wide Viewing Angle

Perfect presentation of images from any angle.





Excellent Visual Effect

High refresh rate, high contrast, and high grayscale, resulting in a more realistic and delicate display with vibrant and saturated colors.



3840Hz high refresh rate

The screen is smoother



10000:1

High Contrast Ratio



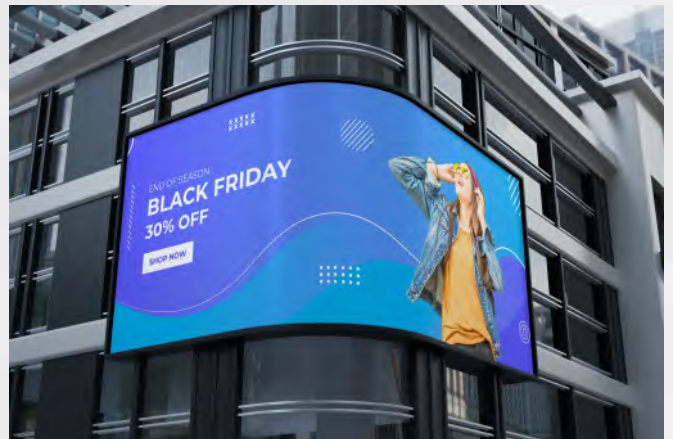
16bit

High Gray Rate



Creative Styling

Support creative shapes such as right angles and corners, and 3D naked eye effects, bringing you a stunning visual experience.



Outdoor Series Specification

Pixel Pitch	P2.976	P3.91	P4.81	P6.25	P7.81	P10.42
SMD Type	SMD1415	SMD1921	SMD1921	SMD2727	SMD2727	SMD2727
Physical Density(dots/m ²)	112896	65536	43264	25600	16384	9216
Module Resolution	168X84	128X64	104X52	80X40	64X32	48X24
Module SIZE(mm)	500X250					
Panel Dimension(WxH/mm)	1000X1000X83 (Customizable for 1500 width and 500/750 height)	1000X1000X83				
Panel Resolution	336X336	256X256	208X208	160X160	128X128	96X96
Module quantity(WxH/mm)	2X4					
Panel Weight(kg)	22.5					
Maintenance Mode	Front & Rear					
Cabinet material	Aluminum					
Brightness(Nits)	4500	6000				
Color temperature(K)	5000-12000 Optional					
Viewing Angle(H/V)	140°/160°					
Best viewing distance	3-100m	4-100m	4-100m	6-150m	8-150m	10-200m
Contrast Ratio	10000 : 1					
Frame-changing Frequency(Hz)	50/60					
Drving Mode	1/21 Scan	1/16 Scan	1/13 Scan	1/8 Scan	1/4 Scan	1/2 Scan
Grey Level	16bit					
Refresh Rate(Hz)	3840					
Max power consumption(W/m ²)	800	650				
Avg power consumption(W/m ²)	200-300	100-200	100-200	100-200	100-200	100-200
Grude	IP65					
Power supply requirements	AC90-264V,47-63Hz					
Working Temp/Humidity(°C/RH)	-20~60°C/10%~85%					
Storage Temp/Humidity(°C/RH)	-20~60°C/10%~85%					
Cert	CCC/CE/RoHS/FCC/CB/TUV/IEC					

Pixel Pitch	P2.976	P3.91	P4.81	P6.25	P7.81	P10.42
SMD Type	SMD1415	SMD1921	SMD1921	SMD2727	SMD2727	SMD2727
Physical Density(dots/m²)	112896	65536	43264	25600	16384	9216
Module Resolution	168X84	128X64	104X52	80X40	64X32	48X24
Module SIZE(mm)	500X250					
Panel Dimension(WxH/mm)	1000X500X83 (Customizable for 1500 width and 500/750 height)	1000X500X83				
Panel Resolution	336X168	256X128	208X104	160X80	128X64	96X48
Module quantity(WxH/mm)	2X2					
Panel Weight(kg)	12					
Maintenance Mode	Front & Rear					
Cabinet material	Aluminum					
Brightness(Nits)	4500	6000				
Color temperature(K)	5000-12000 Optional					
Viewing Angle(H/V)	140°/160°					
Best viewing distance	3-100m	4-100m	4-100m	6-150m	8-150m	10-200m
Contrast Ratio	10000 : 1					
Frame-changing Frequency(Hz)	50/60					
Drving Mode	1/21 Scan	1/16 Scan	1/13 Scan	1/8 Scan	1/4 Scan	1/2 Scan
Grey Level	16bit					
Refresh Rate(Hz)	3840					
Max power consumption(W/m²)	800	650				
Avg power consumption(W/m²)	200-300	100-200	100-200	100-200	100-200	100-200
Grude	IP65					
Power supply requirements	AC90-264V,47-63Hz					
Working Temp/Humidity(°C/RH)	-20~60°C/10%~85%					
Storage Temp/Humidity(°C/RH)	-20~60°C/10%~85%					
Cert	CCC/CE/RoHS/FCC/CB/TUV/IEC					



SHENZHEN LP DISPLAY TECHNOLOGY CO., LTD

☎ 0755-2350 2825

🌐 en.szlpdisplay.com

✉ oversea@szlpdisplay.com

📍 5D-701, Shenzhen Software Industry Base, Haitian Second Road, Nanshan, Shenzhen, Guangdong, China

🏢 Singapore Office:
Lampsi Technology Pte Ltd
2 Yishun Industrial Street 1 #07-30 Northpoint Bizhub Singapore 768159



Company
Official Website