



THE LEADER AND CREATOR OF FLIP CHIP DISPLAY PANEL

# Transformer Series

ALL-IN-ONE MEETING DISPLAY

## PRODUCT OVERVIEW

Transformer Series, is a fully automatic conference all-in-one display with installation-free features. It can be opened and used electrically and mechanically without installation and debugging. Design with movable base, which can be easily moved to any place you need. Three available size 110", 130", 136" options for different space, 2K and 4K resolutions are available. It is the best choice for your conference screen.



Installation Free



Fully Mobile



Adjustable Height



Customizable



1080p & 4K UHD



COB Energy Efficient

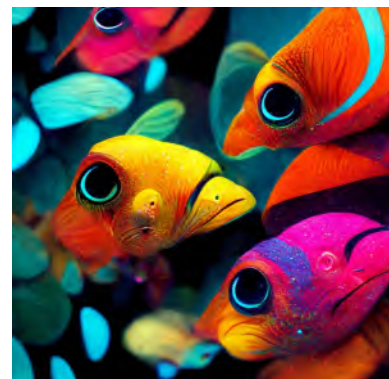
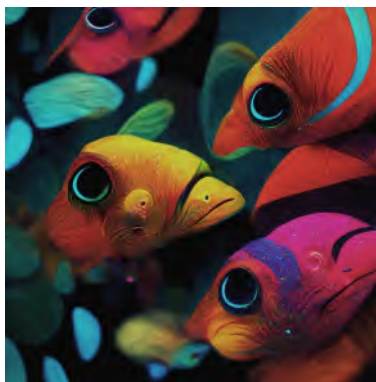
## PRODUCT SIZE

Three kind of size 110",130",136" options.



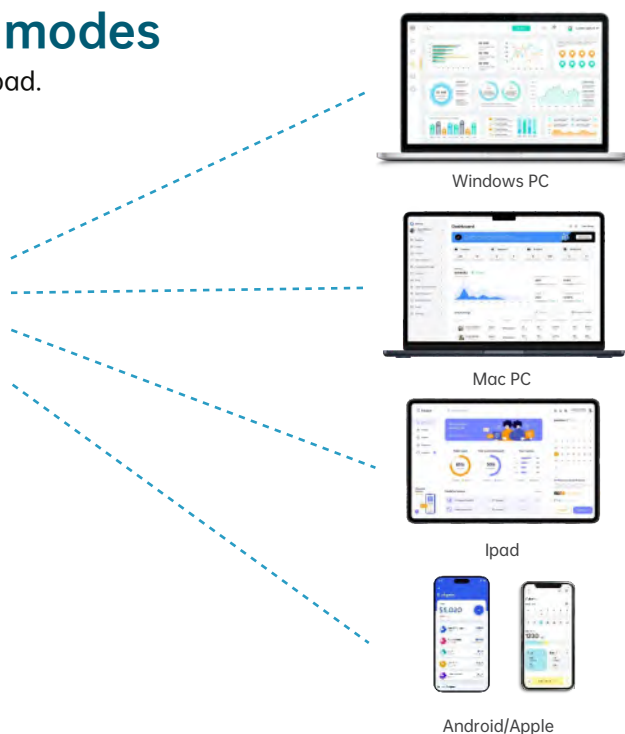
## BROADCAST LEVEL

- 16bit
- 7680HZ refresh rate
- DCI-P3 color gamut



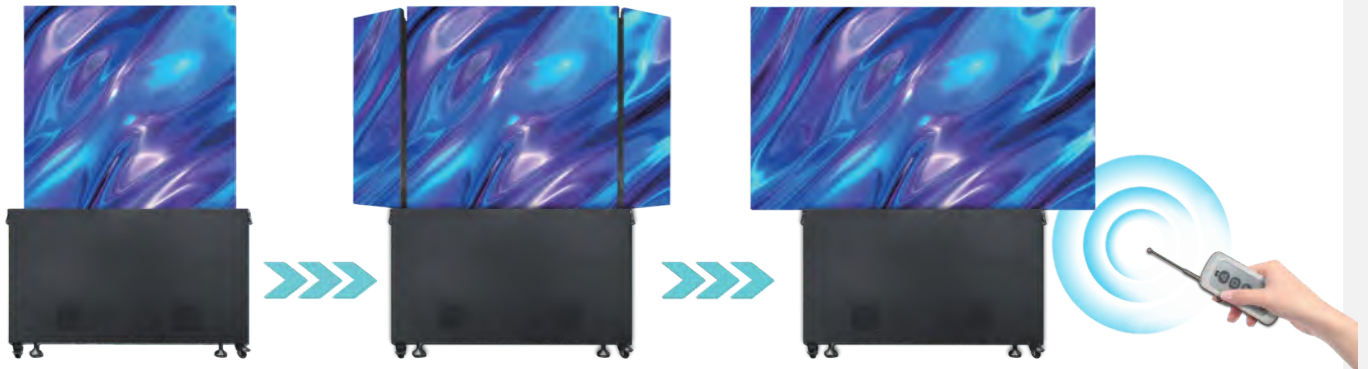
## Multiple screen projection modes

Supports screen mirroring of PC, smartphone and pad.



## INSTALLATION FREE

Designed for convenience and ease of use, this product is pre-configured and ready for immediate use straight from the package. Just connect the power and expand the screen, instantly embark on your digital journey.



## FULLY MOBILE

Transformer series designed with a compact package, with removable wheels on the bottom can easily move through doors and elevator, easily move to anywhere you need.



## APPLICATIONS



# TRANSFORMER SERIES SPECIFICATION

	T110-2K	T130A-2K	T130B-4K	T136A-2K	T136B-4K
Pixel Pitch (mm)	P1.25	P1.5	P0.75	P1.56	P0.78
Resolution (W×H)	1920×1080	1920×1080	3840×2160	1920×1080	3840×2160
Pixel Configuration	COB (SMD / MIP Optional)				
Display Size (mm)(W×H)	2400×1350	2880×1620	2880×1620	3000×1687.5	3000×1687.5
Overall Size (mm)(W×H×D)	1650×1760×520	2170×2084×520	2170×2084×520	2050×2150×520	2050×2150×520
Max. Power Consumption (W)	≤1460	≤2100	≤2800	≤2280	≤3030
Avg. Power Consumption (W)	≤600	≤840	≤1120	≤900	≤1200
Brightness (nits)	1000				
Interface	HDMI×2,3.5×1, USB3.0×2, USB2.0×1, RJ45×1				
WIFI Mode	Wifi-5G band×1, Wifi-2.4G band×1, Wifi-AP×1				
Gray Scale (bit)	14~16				
Color Temp (K)	2000~12000				
Control Panel Type	Remote control / Touch panel				
Frame Rate (Hz)	50/60				
Refresh Rate (Hz)	3840~7680				
Working Voltage (V)	AC: 110V~240V, 50~60Hz				
Lifetime (H)	100,000				
Operation Temp (°C)	-10~+40				
Storage Temp (°C)	-25~+60				
Operation Humidity (RH)	10%~80%, no condensation				
Overall Weight (kg)	470	520	520	550	550

The parameter index will change according to the specific situation of the project (the product shall be subjected to the submitted contract specification)

## SHENZHEN LP DISPLAY TECHNOLOGY CO., LTD

☎ 0755-2350 2825

🌐 [en.szlpdisplay.com](http://en.szlpdisplay.com)

✉ [oversea@szlpdisplay.com](mailto:oversea@szlpdisplay.com)

📍 5D-701, Shenzhen Software Industry Base, Haitian Second Road, Nanshan, Shenzhen, Guangdong, China



Company  
Official Website